

| <u>Table of Contents</u> | <u>Page(s)</u> |
|---|----------------|
| Pierce County Fire Resource Plan..... | 2 |
| Definitions and Terms..... | 4-7 |
| Pierce County Fire Management Zone map..... | 8 |
| One-Call Activation of Teams Organizational Chart..... | 9 |
| Guidelines and Rules of Operation..... | 10-12 |
| APPENDIX A.....Agency Zone Request List..... | 13 |
| APPENDIX B.....Strike Team/Task Force Team leader Overview..... | 14-20 |
| APPENDIX C.....Pierce County Fire Coordinator Call Out..... | 21 |
| APPENDIX D.....Pierce County Overhead Team..... | 22 |
| APPENDIX E.....Resource Lists..... | 23-41 |
| Zone 6..... | 23-27 |
| Zone 7..... | 28-32 |
| Zone 8..... | 33-36 |
| County Wide: Wildland Resources..... | 37-39 |
| County Wide: EMS Task Force..... | 40 |
| County Wide: ALS Strike Team/Ladder Strike Team..... | 41 |
| APPENDIX F.....Hand crew Callout List..... | 42 |
| APPENDIX G.....Communication Center Activation Checklist..... | 43 |
| APPENDIX H.....Resources and Contacts..... | 44-45 |
| APPENDIX I.....Communication Activation Procedure..... | 46 |
| APPENDIX J.....DNR Inmate Crews/Standard Fire Lunches..... | 47-48 |
| APPENDIX K.....Fire Resource Activity Types..... | 49 |

The Pierce County Fire Resource Plan was developed for the purpose of deploying large numbers of Fire Service for disasters or significant fire or EMS incidents. This plan is in no way intended to replace normal mutual aid arrangements, but rather to enhance their use.

- 1) The plan was designed and is coordinated through the Pierce County Fire Chiefs Association's Emergency Management Committee. Currently, participation in this effort constitutes all Fire Agencies within Pierce County.

Mutual aid assistance is not a new concept in the Fire Service. Within Pierce County, mutual aid agreements between Fire Departments have been in place for several years.

The unique feature of the Pierce County Fire Resources Plan is that it allows for the rapid access of large numbers of resources with minimum effort of the requesting agency.

How the system works:

- Pierce County is divided into three (3) geographical zones. A Zone Coordinator coordinates each zone's fire resources.
 - In the event of a disaster or a significant incident that may tax the resources of an individual Department or an entire zone, request goes to the other zones for appropriate resources (i.e. Structure Fire Task Forces, Engine, Ladder, or Basic Life Support Strike Teams).
 - These resources are preplanned within each zone and can be mobilized with a single call to the zone's Coordinating Communication Center.
- 2) This plan was prepared and is maintained by the members of the Pierce County Fire Chiefs Association, Emergency Management Committee, which are the Zone Coordinators, Alternates, and a representative from the Pierce County Department of Emergency Management, and approved by the Pierce County Fire Chiefs Association.
 - 3) This plan was adopted by the Pierce County Fire Chiefs Association 1/1/1989.

FIRE COORDINATOR

The President of the Pierce County Fire Chiefs Association will maintain a list of fire officers who may be designated Pierce County Fire Coordinator, ESF4 of the Pierce County Fire Chiefs Emergency Management Committee. The Chair of the Emergency Management Committee will be the lead Fire Coordinator.

TO INITIATE A CALLOUT:

1. Alpha page the first officer on the list and direct them to contact FireComm PRIORITY.
2. If no response within five minutes, go to the next Officer on the list.

INFORMATION:

The listed officers are all members of the Pierce County Fire Chiefs Association.

- When a large-scale major event occurs, they become responsible for all Pierce County Fire Districts and all City Fire Departments.

When a Resource Activation occurs, **FIRECOMM** will notify the Pierce County Fire Resource Coordinator, so that they may take steps to insure that adequate resources are supplied for the incident and there are enough remaining resources to protect the entire County and coordinate with the South Puget Sound Region of Kitsap, King, Mason and Pierce Counties.

DEFINITIONS AND TERMS

Advanced Life Support (ALS) Strike Team — 5 ALS (Transport capable) aid cars with 2 personnel, one of which is a paramedic and a team leader in a separate vehicle with common communications.

Assembly Point — A pre-designated place for team assembly and check-in.

Base — A location at which the primary logistics functions are coordinated and administered. The incident name or other designator will be added to the term “Base”. The Incident Command Post may be co-located with the base. There is only one base per incident.

Basic Life Support (BLS) Strike Team — 5 BLS (transport capable) aid cars with 2 personnel, one of which is an Emergency Medical Technician, and a Strike Team Leader in a separate vehicle with common communications.

Camp — A geographical site within the general incident area, separate from the incident base, equipped to and staffed to provide sleeping, food, water, and sanitary services to incident personnel.

Command Vehicle — A mobile vehicle used by the Team Leader carrying communications equipment, tactical command supplies, work sheets and other equipment required to facilitate Team Leader functions.

Division Supervisor — Personnel assigned by the Incident Commander to supervise resources assigned, and oversee the operations in a defined geographical area of an incident.

EMS Task Force — 2 ALS and 3 BLS aid units (transport capable) and a Team Leader in a separate vehicle with common communications. ALS units staffed with 1 paramedic and 1 EMT. BLS units staffed with 1 EMT and 1 driver.

Engine — (Pumper) A structural fire attack vehicle containing a supply of water, a 750-gpm pump, attack lines and related equipment with a minimum of 3 personnel, maximum of 4.

Fire Coordinator — The representative (appointed by the County Fire Chief’s Association) who is responsible for the overall coordination and prioritization of fire resources during a declared emergency or disaster. The Fire Coordinator may be located at the Counties Emergency Operations Center (EOC), FireComm or any other location.

Fire Resource Zone — A group of fire districts or fire departments that comprise a specific geographical area in a county that form a resource zone.

Incident Commander — An individual who is responsible for the management of all Incident operations.

DEFINITIONS AND TERMS (cont'd)

Interface Task Force — 2 Structural Engines, 2 Wildland Engines, 1 Tender, and a Team Leader in a separate vehicle with common communications and equipment to support structural protection in a Wildland interface fire.

Ladder — (Truck aerial) A structural fire attack vehicle containing a 65' + aerial ladder with a water tower device, ground ladders, forcible entry tools, ventilation and related equipment, and a minimum of 3 personnel, maximum of 5.

Ladder Strike Team — Consists of 5 Ladder Trucks and a Team Leader in a separate vehicle with common communications.

Overhead Personnel — Personnel who are assigned to supervisory ICS positions such as Incident Commander, Commander Staff, General Staff, Directors, Supervisors, Unit Leaders, and MSO's.

Passport Accountability System — A fire ground accountability system that uses tags, passports, and status boards to account for companies and teams, and to identify the individual members of a team.

Response Time — Each vehicle requested will advise Fire Comm Dispatch within four (4) minutes of tone out of their availability for response. Arrival at the Assembly Point must be within 30 minutes of dispatch.

Request Number/Mission Number — Assigned by the Department of Emergency Management or Department of Natural Resources to account for resources ordered. All resources must have a Request Number when the State Mobilization Plan is activated.

Rural Task Force — 3 Structural Engines, 2 Water Tenders, and 1 Team Leader in a separate vehicle with common communications.

Specialized Resources — Other types of resources not identified in Strike Teams or Task Forces that can be used for disasters, fire, EMS, HAZMAT, or heavy rescue incidents.

Staging Area — A location either pre-determined or designated as an assembly area for resources that are assigned on an immediate available status (within 3 minutes).

Strike Team — A set number of single "like" resources (5) that have common communications, a Team Leader in a separate vehicle. Can be formed on or off the incident scene.

Structural Engine Strike Team — Consists of 5 Structural Engines and a Team Leader in a separate vehicle with common communications.

DEFINITIONS AND TERMS (cont'd)

Task Force — A set number of “unlike” resources that have common communications, a Team Leader in a separate vehicle with common communications. Can be formed on or off the incident scene.

Team Leader — Team Leaders for Strike Team/Task Forces shall be a Battalion Chief or higher rank (except wildland). The Strike Team/Task Force Leader shall assemble, respond, and supervise a Strike Team or Task Force from their resource zone.

Tender — (Tanker, ICS Type 3) A fire fighting vehicle used to transport large amounts of water, 1000 gallons or more, a 200gpm pump, 1 portable pump, 100 feet 2-1/2” hose and 2 personnel.

Tender Strike Team — 5 Tenders and a Team Leader in a separate vehicle with common communications.

Truck Strike Team — 5 Ladder Trucks, a Team Leader in a separate vehicle with common communications.

Urban Task Force — 3 Structural Engines, 1 Ladder Truck (1 aid car optional) and a Team Leader in a separate vehicle with common communications.

Unified Command — A command structure which provides for all agencies or individuals who have jurisdictional responsibility, either geographical or functional, to jointly manage an incident through a common set of objectives.

Wildland Engine — An ICS type 6 vehicle. With a minimum of 50 gpm pump, 200 gallon tank, 300 feet of 1-1/2” hose and a minimum of personnel, maximum of 3.

Wildland Engine Strike Team — 5 Wildland (ICS type 6) Engines with a Team Leader in a separate vehicle with common communications.

Wildland Handcrew — 10 personnel and a Team Leader trained in wildland firefighting with wildland equipment, transportation and communications. The crew will be equipped and mobile with limited to moderate experience.

Wildland Task Force — 3 Wildland Engines, 1 Water Tender and a Task Force Leader in a separate vehicle with common communications.

Zone Coordinator/Alternate — Designated officers responsible for coordinating fire service resources within designated geographical boundaries titled Zones.

TYPES OF STRIKE TEAMS

Advanced Life Support (ALS) Strike Team — 5 ALS (transport capable) aid cars with 2 personnel, one of which is a paramedic and a team leader in a separate vehicle with common communications.

Basic Life Support (BLS) Strike Team — 5 BLS (transport capable) aid cars with 2 personnel, one of which is an Emergency Medical Technician, and a Strike Team Leader in a separate vehicle with common communications.

Ladder Strike Team — 5 Ladder Trucks and a Team Leader in a separate vehicle with common communications.

Structural Engine Strike Team — 5 Structural Engines and a Team Leader in a separate vehicle with common communications.

Tender Strike Team — 5 Tenders and a Team Leader in a separate vehicle with common communications.

Truck Strike Team — 5 Ladder Trucks, and a Team Leader in a separate vehicle with common communications.

Wildland Engine Strike Team — 5 (ICS type 6) Engines with a Team Leader in a separate vehicle with common communications.

TYPES OF TASK FORCES

EMS Task Force — 2 ALS and 3 BLS aid units (transport capable) and a Team Leader in a separate vehicle with common communications.

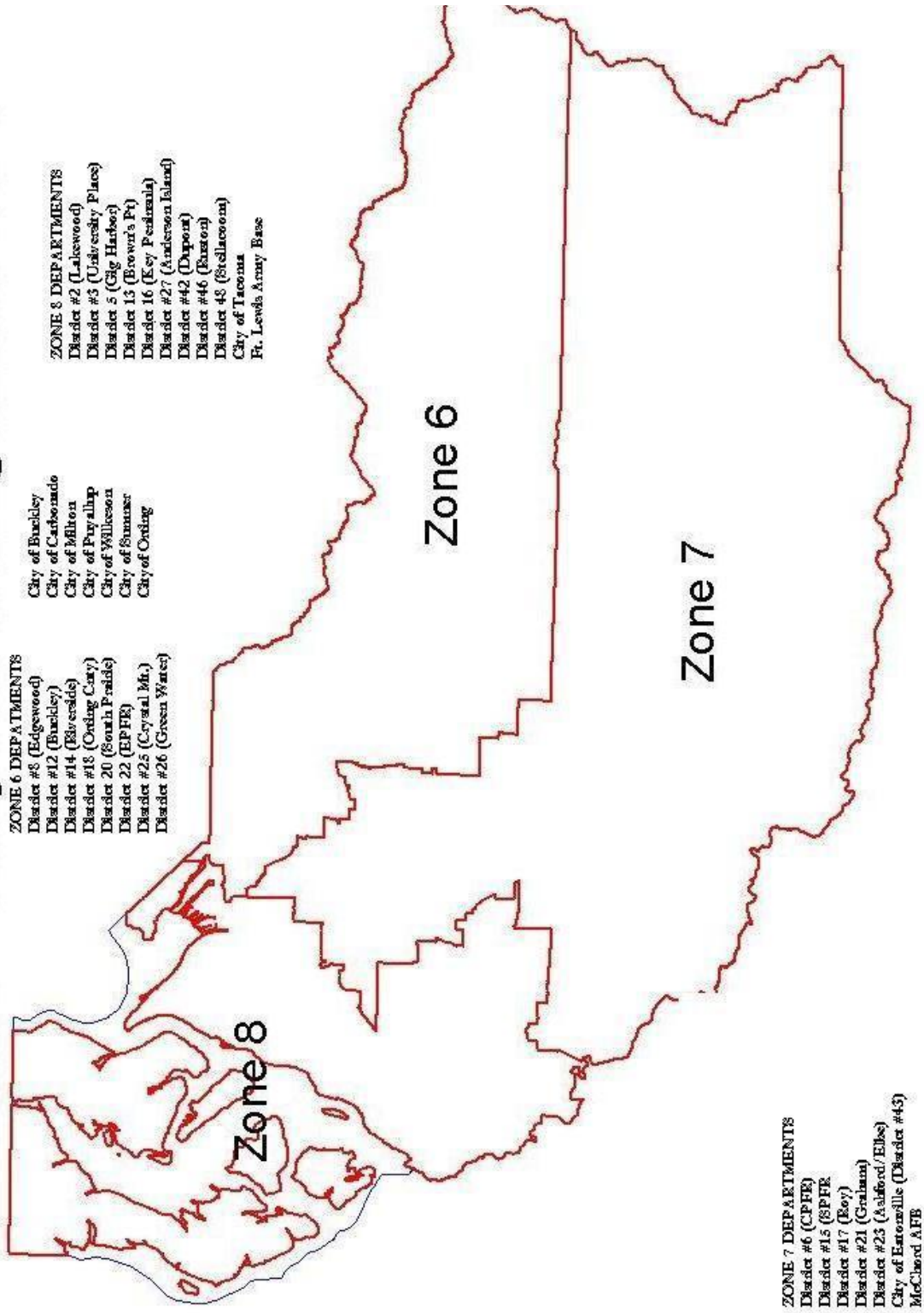
Interface Task Force — 2 Structural Engines, 2 Wildland Engines, 1 Tender, and a Team Leader in a separate vehicle with common communications and equipment to support structural protection in a wildland interface fire.

Rural Task Force — 3 Structural Engines, 2 Water Tenders, and 1 Team Leader in a separate vehicle with common communications.

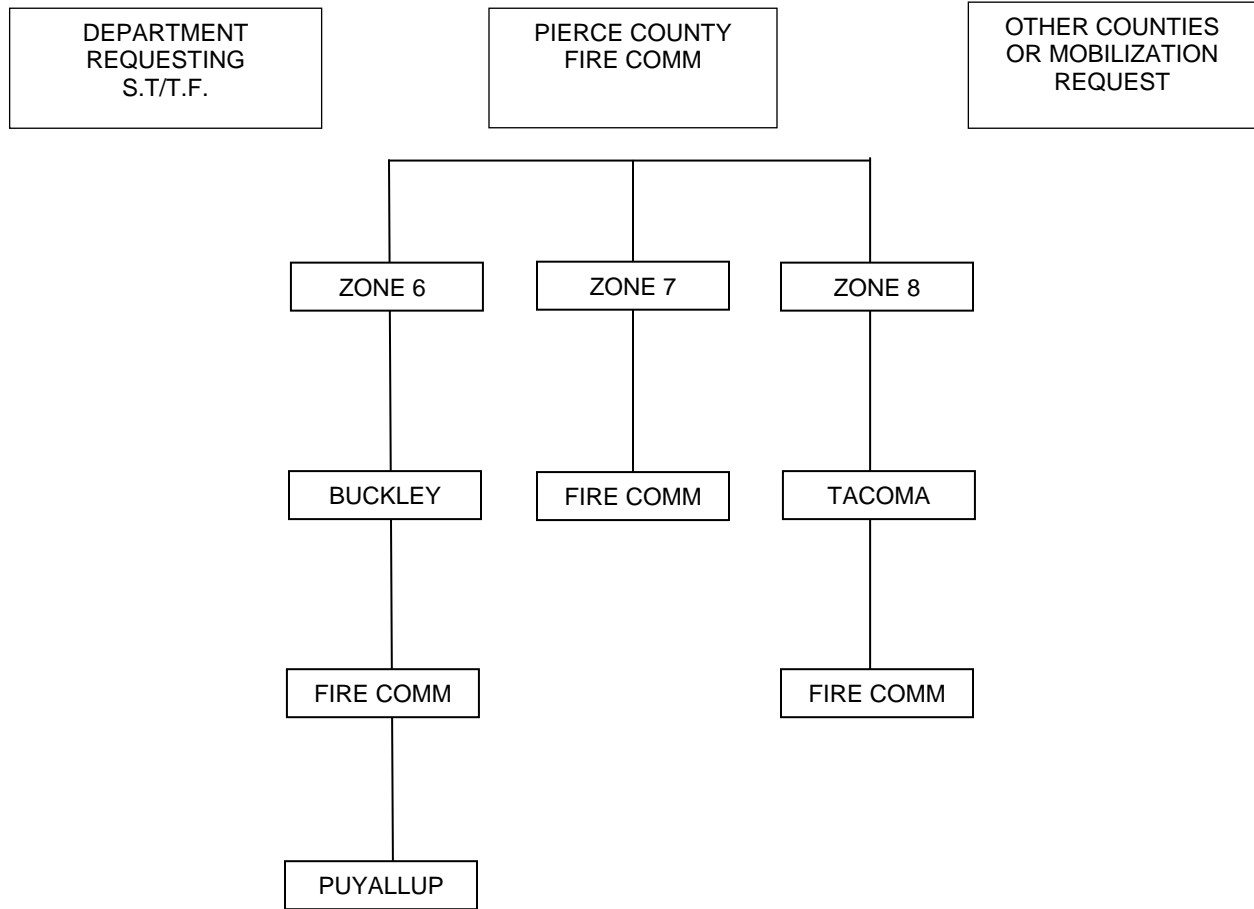
Urban Task Force — 3 Structural Engines, 1 Ladder Truck, (1 aid care optional), and a Team Leader in a separate vehicle with common communications.

Wildland Task Force — 3 Wildland Engines, 1 Tender, and a Team Leader in a separate vehicle with common communications.

Pierce County Fire Management Zones



ONE-CALL ACTIVATION OF TEAMS



- 1) Strike Team or Task Force from Zone 6, 7, 8, is requested through FireComm.
- 2) Run cards predetermine the apparatus for response.
- 3) FireComm dispatches FireComm Users and respective dispatch center(s) simultaneously.
- 4) All apparatus will confirm response via (153.890) Pierce County Fire F-1 to FireComm.
- 5) Out of service apparatus will report via (153.890) Pierce County Fire F-1 or their respective dispatch centers.
- 6) This one-call system will function when Pierce County Department of Emergency Management needs to make emergency notification to all Fire Dispatch Centers in Pierce County.

GUIDELINES AND RULES OF OPERATION

INCIDENT COMMAND

All participating agencies shall use an Incident Management System (IMS) to manage resources activated in accordance with this plan.

NUMBERING SYSTEM FOR RESPONDING UNITS

After a zone has assembled a Task Force or Strike Team response, the Coordinating Communication Center and the Team Leader shall renumber the Units as follows (zone prefix followed by apparatus number):

Zone 6 = Prefix (Engine 60-2011, 60-111, etc.)

Zone 7 = Prefix (Engine 70 70-611, Truck 70-616, etc.)

Zone 8 = Prefix (Leader 80-01, Engine 80-17 (for TFD 17), etc.)

If two or more teams are dispatched from the same zone, the second and subsequent team leader will utilize the next available number for that zone (i.e. second team leader from zone 6 = 60-02, third team leader from zone 7 = 70-03, etc.)

Designation for the Task Force/Strike Team Leader shall be "Leader" (i.e. Battalion 2 from zone 8 becomes "Leader 80-01).

When teams respond out of county, preface the call sign with Pierce (i.e. Pierce Leader 60-01). Renumbered units will remain operational until they return to the Home Zone and are deactivated.

All Leaders shall use the Passport Accountability System to maintain accountability of all team members.

One Team Leader will be dispatched for the team. The Team Leader will be directed by dispatch to call Fire Comm for initial instructions. The Team leader may appoint an Assistant Team Leader. The Assistant Team Leader will add an "A" to the end of the number identifier. (Assistant Team Leader from Zone 6 would be designated "Leader 60-01A".)

FIRE GROUND OPERATIONS

Team assigned to incident operations will report to the Incident Commander, Staging Area, or Base as directed. Whenever possible, the Units will be kept together and under the control of the Team Leader. The team may split under the direction of the Team Leader and the Assistant Team Leader.

Team Leaders and/or Units committed to interior structure fire fighting or limited access hazardous environments shall have direct radio or communication capabilities with the assigned supervisor. It is recognized that keeping EMS Units together is not practical, and their use and assignment will be at the discretion of the Incident Commander.

FILL IN ASSIGNMENTS

Resources used as fill-in will utilize following guidelines.

- a. Pair up single Units with an in-service Unit from the Host Zone and then respond together.
- b. A single Unit that has communication capability directly with the Host Zone Communication Center may operate independently only when a rider from the Host Zone is provided. Contact with the Team Leader must be maintained.

APPARATUS OPERATORS

Strike Team/Task Force apparatus operators will only operate apparatus in which they respond. The host department or mutual aid companies with apparatus operating at the scene will maintain an operator when Strike Team/Task Force personnel are assigned to hose lines or elevated streams.

OVERHEAD TEAMS

Overhead teams are organized, requested and dispatched under the basic guidelines of this plan. The Overhead Team's purpose is to provide an organized response of command personnel to agencies requesting assistance in managing an emergency situation.

The team may be requested on second alarms or greater or special events. Team members must be within 20 minutes response time of the incident to be considered "in service". The team may assist command of the requesting agency and will not assume command of any incident.

PIERCE COUNTY DEPARTMENT OF EMERGENCY MANAGEMENT

Notification of Emergency Operations Center (EOC)

Pierce County Department of Emergency Management shall be notified whenever resources are requested under this plan.

The Pierce County Emergency Operations Center (EOC) is a facility designated to provide coordination and support for inter-agency needs during field operations. In general, the EOC is a location where agencies can request resources, which are outside those an agency normally has available. It is also the coordination center for collecting emergency and disaster information so Pierce County resources can be effectively used to support emergency response efforts of County agencies and other jurisdictions.

The EOC may be activated by Emergency Management staff, or upon request from an agency or jurisdiction. The basic concept of operations is to open the facility, make contact with field command officers, get information as to what is happening, and respond to requests for assistance or coordination.

Examples of support from the EOC would include, but not be limited to, requests for State or Federal assets, additional notifications, coordination of on-scene support needs such as feeding emergency workers, coordination with the media for release of emergency public information, weather reports, and locating special resources. When requests are made, unless arrangements are made otherwise, it is policy that the requesting agency expects to cover costs associated with requested resources.

The Pierce County Department of Emergency Management has trained additional support staff to assist with EOC operations. Activation time depends upon the circumstances, but our policy is to be able to activate the facility within one hour of the request. Full staffing would potentially take longer, depending on the time of day and other circumstances.

APPENDIX – A**AGENCY ZONE REQUEST LIST**

| <u>Location of Incident</u> | <u>Response Order</u> |
|--------------------------------------|------------------------------|
| Buckley Fire Dept – City (Zone 6) | 7 – 3 – 8 – 3 – 5 – 2 or PCW |
| Carbonado Fire Dept (Zn 6) | 7 – 3 – 8 – 3 – 5 – 2 or PCW |
| District 1 – Sumner (Zn 6) | 8 – 3 – 7 – 3 – 5 – 2 or PCW |
| District 2 – Lakewood (Zn 8) | 6 – 7 – 3 – 3 – 5 – 2 or PCW |
| District 3 – University Place (Zn 8) | 6 – 7 – 3 – 3 – 5 – 2 or PCW |
| District 5 – Gig Harbor (Zn8) | 7 – 6 – 3 – 3 – 5 – 2 or PCW |
| District 6 – Central Pierce (Zn 7) | 6 – 8 – 3 – 3 – 5 – 2 or PCW |
| District 8 – Edgewood (Zn 6) | 8 – 7 – 3 – 3 – 5 – 2 or PCW |
| District 12 – Buckley (Zn 6) | 7 – 8 – 3 – 3 – 5 – 2 or PCW |
| District 13 – Brown’s Point (Zn 8) | 7 – 3 – 6 – 3 – 5 – 2 or PCW |
| District 14 – Riverside (Zn 6) | 8 – 7 – 3 – 3 – 5 – 2 or PCW |
| District 15 – Eatonville (Zn 7) | 6 – 8 – 3 – 3 – 5 – 2 or PCW |
| District 16 – Key Peninsula (Zn 8) | 7 – 6 – 3 – 3 – 5 – 2 or PCW |
| District 17 – Roy (Zn 7) | 8 – 6 – 3 – 3 – 5 – 2 or PCW |
| District 18 – Orting (Zn 6) | 8 – 3 – 7 – 3 – 5 – 2 or PCW |
| District 20 – South Prairie (Zn6) | 8 – 3 – 7 – 3 – 5 – 2 or PCW |
| District 21 – Graham (Zn 7) | 8 – 6 – 3 – 3 – 5 – 2 or PCW |
| District 22 – East Pierce (Zn 6) | 7 – 3 – 8 – 3 – 5 – 2 or PCW |
| District 23 – Elbe/Ashford (Zn 7) | 6 – 8 – 3 – 3 – 5 – 2 or PCW |
| District 25 – Crystal Mt. (Zone 6) | 7 – 3 – 8 – 3 – 5 – 2 or PCW |
| District 26 – Greenwater (Zn 6) | 7 – 3 – 8 – 3 – 5 – 2 or PCW |
| District 27 – Anderson Island (Zn 8) | 7 – 6 – 3 – 3 – 5 – 2 or PCW |
| Dupont Fire Dept (Zn 8) | 7 – 6 – 3 – 3 – 5 – 2 or PCW |
| Eatonville Fire Dept – City (Zn 7) | 6 – 8 – 3 – 3 – 5 – 2 or PCW |
| Ft. Lewis Fire Dept (Zn 8) | 6 – 7 – 3 – 3 – 5 – 2 or PCW |
| McChord Fire Dept (Zn 7) | 8 – 6 – 3 – 3 – 5 – 2 or PCW |
| Milton Fire Dept (Zn 6) | 8 – 7 – 3 – 3 – 5 – 2 or PCW |
| Puyallup Fire Dept (Zn 6) | 8 – 7 – 3 – 3 – 5 – 2 or PCW |
| Ruston Fire Dept (Zn 8) | 6 – 7 – 3 – 3 – 5 – 2 or PCW |
| Steilacoom Fire Dept (Zn 8) | 6 – 7 – 3 – 3 – 5 – 2 or PCW |
| Tacoma Fire Dept (Zn 8) | 6 – 7 – 3 – 3 – 5 – 2 or PCW |
| Wilkeson Fire Dept (Zn 6) | 7 – 3 – 8 – 3 – 5 – 2 or PCW |
| Orting Fire Dept (Zn 6) | 8 – 3 – 7 – 3 – 5 – 2 or PCW |
| | |

APPENDIX – B

STRIKE TEAM / TASK FORCE LEADER

CHECKLIST

Note: *(This check list should be considered as a minimum requirement for this position)*

- Obtain briefing from Division/Group Supervisor.
- Review strike team/task force assignments with subordinates and assign tasks.
- Monitor work progress and make changes when necessary.
- Determine need for assistance on assigned task.
- Coordinate activities with adjacent strike team/task forces and single resources.
- Submit situation and resource status information to Division/Group Supervisor.
- Report special events.
- Request service/support.
- Report status and location changes.
- Maintain Unit Log.

RESPONSIBILITIES AND PROCEDURES

ORGANIZATION

The Strike Team/Task Force Leader is responsible for performing tactical assignments assigned to strike team or a task force. The Leader reports work progress, resource status, and other information to a Division Supervisor and maintain work records on assigned personnel. The Strike Team/Task Force Leader reports to a Division/Group Supervisor.

APPENDIX – B (cont'd)

STRIKE TEAM LEADER AND INCIDENT COMMAND SYSTEM ORGANIZATION

DESCRIPTIONS

A strike team is a set number of single resources of the same type. A strike team must have common communications and a leader. Strike teams may be formed either on or off of the incident. If a strike team is formed on the incident, it will be disassembled prior to demobilization.

A task force is composed of dissimilar resources of any kind or type. A task force is formed when a combination of resources is needed for a particular assignment. A task force must have common communications and a leader. Task forces may be formed on or off the incident. If a task force is formed on the incident it will be disassembled when no longer required for a particular assignment.

MAJOR RESPONSIBILITIES AND PROCEDURES

The major responsibilities of a Strike Team/Task Force Leader are stated below. Following each responsibility are listed procedures for implementing the responsibility.

- ✓ Obtain briefing from Division/Group supervisor Receive briefing and initial instructions concerning work assignments.
- ✓ Obtain the incident action plan when available.
- ✓ Review assignments with subordinates and assign tasks.
- ✓ Reviews strike team/task force assignment and general activities with subordinate personnel.
- ✓ Assign tasks to subordinate personnel by providing time requirements and specific geographic references.
- ✓ Monitor work progress when necessary and make changes.
- ✓ Obtain information concerning progress and assigned tasks from subordinate personnel by:
 - ✓ Special requests to personnel.
 - ✓ Periodic routine reports from personnel.
 - ✓ Personal survey. Compare progress with assignments (assuring a coordinated effort between adjacent resources).
 - ✓ Take corrective action, as appropriate.
 - ✓ Ensure general welfare and safety of strike team/task force personnel.
 - ✓ Maintain communications with subordinates.

APPENDIX – B (cont'd)

STRIKE TEAM LEADER AND INCIDENT COMMAND SYSTEM ORGANIZATION

Determine need for assistance on assigned work task. In performing this function, the Strike Team/Task Force Leader must use personal judgment in determining whether a temporary reduction in capability (e.g., equipment failure, personnel sickness, etc.) warrants a request for the replacement of a strike team/task force resource. Procedures for requesting assistance is as follows:

Identify need for assistance by means of:

- ✓ Report from subordinates
- ✓ Monitoring work progress
- ✓ Personal observations
- ✓ Determine appropriate corrective action
- ✓ Determine assistance required to implement corrective action
- ✓ Coordinate with Division/Group Supervisor and request assistance

APPENDIX – B (cont’d)

STRIKE TEAM/TASK FORCE LEADER

ASSEMBLY POINT CHECKLIST

| | |
|------------|---|
| Action | Assemble and check in assigned Units at a pre-designated assembly point and report status. Direct Task Force/Strike Team travel from Zone assembly point to designated checkpoint at the assignment location. |
| Conditions | Information from FIRE COMM to include Zone assembly points, assigned Units, special route of travel, reporting requirements, radio frequency, and check-in point. |
| Standards | All assigned Units are assembled at the Zone assembly point fully equipped. All Units are checked in utilizing the correct check-in procedure. Task Force/Strike Team responds to assignment location. |

KEY COMPONENTS:

1. After tone-out, obtain complete information from FIRE COMM (253-588-5217) - Activate Unit Log.
2. Identify Zone predetermined assembly point.
3. Travel to Zone assembly point.
4. Check arrival status of assigned units.
5. Inspect assigned Units; make introductions; appoint assistant Task Force/Strike Team Leader; collect Passports; note qualifications of personnel.
6. Number assigned Units on *officer's* outside windshield according to numbering system identified on page 11 of this plan and assign Task Force/Strike Team radio frequency. The assigned unit number and frequency should be displayed on the *inside* of the cab for reference by crewmembers.
7. Brief assigned Unit Leaders and determine: route of travel; en route logistical needs (fuel, food, etc.); proper formation and communications; and provide instructions for travel procedures, safety, and actions in event of en route problems.
8. Provide FIRE COMM with route of travel and request arrangements for en route logistical needs. Determine en route check points if necessary. When possible, communication of this information with FIRE COMM should be made via telephone (253-588-5217).
9. Report Task Force/Strike Team status to FIRE COMM (includes any Units that fail to arrive or fail readiness inspection). Report "In Service Responding".
10. Direct Units during travel to check-in point or incident location.
11. Report to the designated official at the check-in point and provide required information.
12. Await assignment or further instructions: Available; Assigned; Out-of- service.
13. Communications en route will be through Team Leader. Individual units will not contact FireComm or any dispatch agency while en route.

APPENDIX – B (cont'd)

STRIKE TEAM/TASK FORCE LEADER

TACTICAL ASSIGNMENT CHECKLIST

| | |
|------------|--|
| Action | Direct tactical operations. |
| Conditions | Given assignment for tactical deployment of Task Force/Strike team. |
| Standards | Assignment complete to meet requirements of incident action plan and instructions from supervisor; ensure safety and welfare of personnel and equipment. |

KEY COMPONENTS:

1. Size up fire situation.
2. Plan tactical action on assigned area.
3. In conjunction with individual Fire Officers, assess capabilities of assigned personnel and equipment.
4. Brief Fire Officers and make specific assignments (include safety, escape routes, and fire behavior.)
5. Monitor progress/work to ensure it meets prescribed standards. Make corrections as necessary.
6. Communicate information on changing conditions and special events to Fire Officers and Supervisor.
7. Coordinate Task Force/Strike Team activities with resources working in adjacent areas.
8. Determine needs for additional resources, logistical support, and replacements; coordinate with Supervisor.
9. Mantain Unit log.
10. Brief relief forces.

APPENDIX – B (cont'd)

STRIKE TEAM/TASK FORCE LEADER

TEAM DEMOBILIZATION CHECKLIST

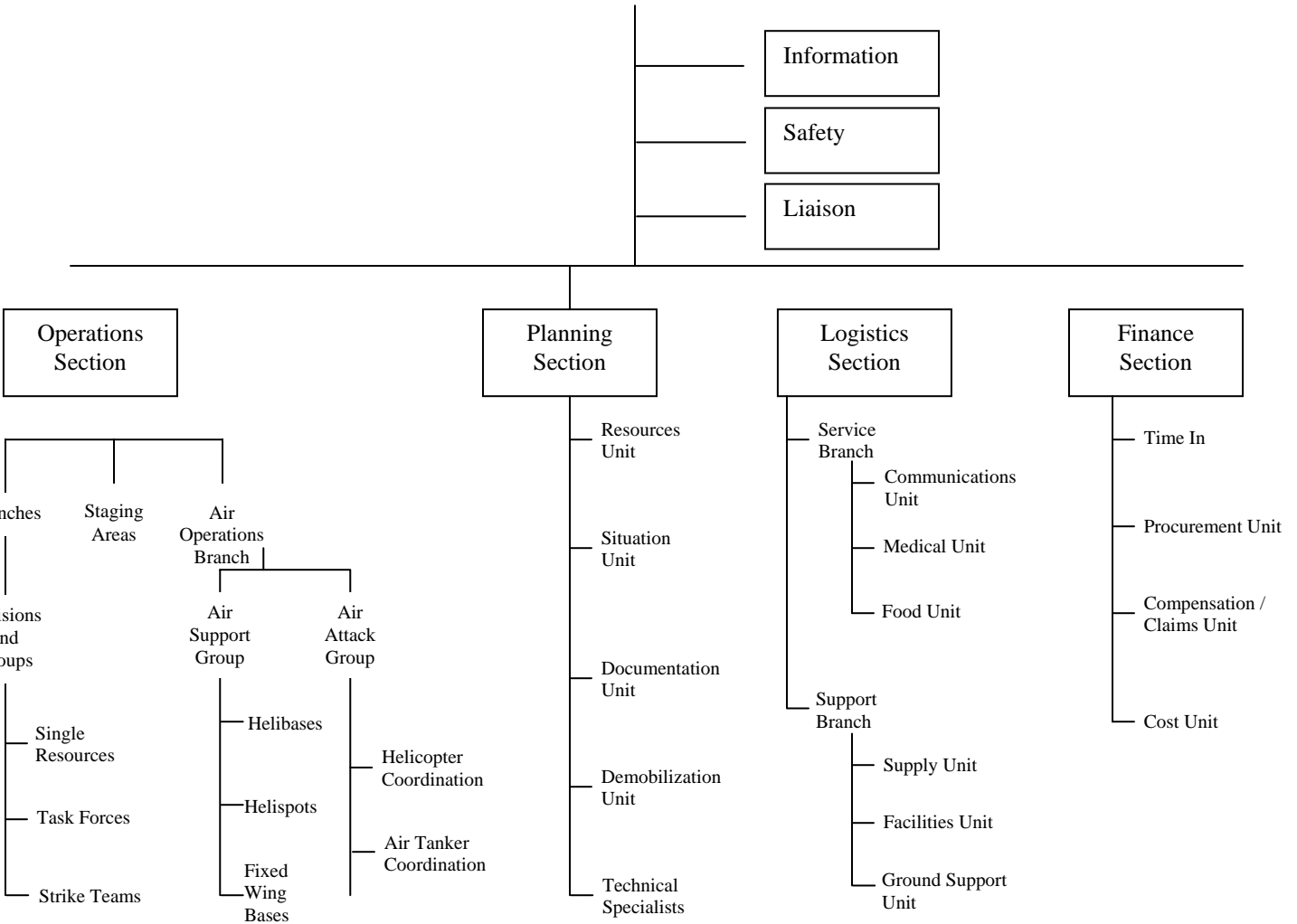
| | |
|------------|--|
| Action | Deploy Task Force/Strike Team Leader to Home Zone. |
| Conditions | Given instruction to demobilize Task Force/Strike Team from assigned incident to Home Zone. |
| Standards | Units are returned to disassembly point or home location, or check in at other incident safely and in required time frame. |

KEY COMPONENTS:

1. Receive instructions.
2. Confirm demobilization instructions with Supervisor at incident.
3. Inspect Units and personnel to ensure they are ready to leave in a state of readiness (rest, repairs, tools, fuel, etc.) Lost or damaged equipment, personnel injuries, etc. are to be entered on the Team Leader Incident Report form.
4. Complete incident evaluation forms and Unit Log.
5. Complete demobilization checkout.
6. Distribute time reports to Company Officers.
7. Assemble Task Force/Strike Team for departure and brief Company Officers.
8. Depart incident for assigned locations or return to zone assembly point.
9. At assembly point, inspect units and personnel and disassemble Task Force/Strike Team.
10. Team Leader contacts FireComm to advise the team is demobilized. Each unit checks in with their respective dispatch center prior to leaving assembly point after demobilization is complete.
11. Team Leader makes reports, maintains originals, and forwards a complete set of reports to his/her Zone Coordinator. Zone Coordinator maintains a set and forwards a set to Emergency Management Committee Chair.

APPENDIX – B (cont'd)

INCIDENT COMMAND



APPENDIX – C**PIERCE COUNTY FIRE COORDINATOR****CALL OUT LIST**

| Call Sign | Name | Home Phone | Cell Phone | Pager | Tone |
|------------------|---------------------|-------------------|-------------------|--------------|-------------|
| C4501 | Chief Jim Jaques | 253-939-6062 | 253-405-2061 | 253-573-5976 | TASK |
| C2102 | Chief Gary Franz | 253- | 253-381-6902 | 253-207-1902 | 21-1D |
| C1401 | Chief Andy McAfee | 253-435-6028 | 253-377-3350 | 253-428-6903 | 14-0 |
| C401 | Chief Dan Packer | 253-862-2935 | 253-377-1334 | 253-209-8401 | TRIPRE |
| C1501 | Chief Dennis Chafe | 253-847-6965 | 253-208-0140 | 253-404-3291 | 15-0 |
| C5201 | Chief Alan Predmore | 360-825-0454 | 253-670-4062 | 253-404-2649 | BUCK |
| C402 | AC John McDonald | 253-891-8981 | 253-377-1330 | 253-396-2265 | TRIPRE |
| C501 | Chief Bob Black | 253-851-3487 | 253-377-4597 | 253-428-6871 | 5-MI |
| C601 | Chief Jack Andren | 253-535-1870 | 253-606-5601 | 253-428-9301 | 6-OF |
| C201 | Chief Paul Webb | 253-983-1234 | 253-377-3132 | 253-428-1702 | 2-PRE |
| TAC192 | AC Jeff Jensen | 253-952-7494 | 253-973-0092 | 253-428-9092 | TASK |
| C403 | AC Dave Wakefield | 253-862-7102 | 253-377-1325 | 253-396-2336 | TRIPRE |

DIRECTIONS:

3. Alpha page the first officer on the list and direct them to contact FireComm PRIORITY.
4. If no response within five minutes, go to the next Officer on the list.

INFORMATION:

- The above noted officers are all members of the Pierce County Fire Chiefs Association.
- When a large-scale major event occurs, they become responsible for all Pierce County Fire Districts and all City Fire Departments.
- When a Resource Activation occurs, **FIRECOMM** will notify the Pierce County Fire Resource Coordinator, so that they may take steps to insure that adequate resources are supplied for the incident and there are enough remaining resources to protect the entire County and coordinate with the South Puget Sound Region of Kitsap, King, Mason and Pierce Counties.

APPENDIX – D

PIERCE COUNTY WIDE: OVERHEAD TEAM

| RESOURCES: | TONE | CALLSIGN | PERSONNEL: | DEPARTMENT |
|-----------------------|----------------|-----------------|----------------------------|-----------------------|
| Overhead Team: | TRI-PRE | *C401 | Chief Dan Packer | East Pierce |
| | 6-OF | *C604 | A/Chief Sue Tucker | Central Pierce |
| 6 Personnel | TASK | *C192 | A/Chief Jeff Jensen | Tacoma |
| 5 Chief Officers | 2-Pre | *C202 | A/Chief Ken Sharp | Lakewood |
| 1 MSO | 14-0 | *C1401 | Chief Andy McAfee | Riverside |
| Medical List: | TASK | *PUYF4 | B/C Dave Potter | Puyallup Fire |
| | 5-MI | C508 | A/C Paul Berlin | Gig Harbor Fire |
| | TRI-PRE | C404 | A/C Russ McCallion | East Pierce |
| | 17-0 | C1702 | A/C Sam Yount | Dist 17 |
| Chief Officers | TRI-PRE | C403 | A/C Dave Wakefield | East Pierce |
| | TASK | CPUYF2 | D/C Tim Pierce | Puyallup Fire |
| | 6-OF | C602 | A/C Doug Willis | Central Pierce |
| | 21-1D | C2102 | A/C Gary Franz | Graham Fire |
| | 5/MI/N/S/C | C502 | A/C Eric Watson | Gig Harbor Fire |
| | BUCK | C5201 | Chief Alan Predmore | Buckley |
| | 6-OF | C606 | A/C Matt Holm | Central Pierce |
| | 15-0 | C1501 | Chief Dennis Chafe | So Pierce Fire |
| | 6-OF | C605 | A/C Bryan Pearson | Central Pierce |
| | 21-1D | C2103 | A/C Tony Judd | Graham Fire |
| | 6-OF | C601 | Chief Jack Andren | Central Pierce |
| | TASK | CPUF1 | Chief Merle Frank | Puyallup Fire |
| | 15-0 | C1502 | A/C Larry Spohn | So Pierce Fire |
| | TASK | C189 | A/C Ron Stephens | Tacoma Fire |
| | TASK | C187 | A/C Gary Steinhoff | Tacoma Fire |
| | TASK | CFL1 | Chief Dixon | Ft Lewis Fire |
| | TASK | PUYF7 | B/C Dennis Lawson | Puyallup Fire |
| | 6-OF | C609 | B/C Wayne Garden | Central Pierce |

NOTE An Overhead Team consists of five (5) Chief Officers and one (1) MSO, or less if specifically requested. If a second or third Overhead Team is requested, continue down the list until exhausted.

*** DENOTES THE MINIMUM NUMBER OF APPARATUS THAT MAKES UP EACH RESPONSE**

APPENDIX – E

ZONE 6: COORDINATORS

Preplanned Resources

| | | | |
|-----------------------|-----|----------------------------|-----|
| ALS Strike Team: | PCW | Rural Task Force: | 1 |
| BLS Strike Team: | 1 | Structure Eng Strike Team: | 1 |
| EMS Task Force: | PCW | Tender Strike Team: | 1 |
| Interface Task Force: | 1 | Urban Fire Task Force: | 1 |
| Ladder Strike Team: | PCW | Wildland Eng Strike Team: | PCW |
| Overhead Team | PCW | Wildland Task Force: | 1 |
| | | Wildland Hand Crew: | N/A |

Specialized Resources

| | | |
|--------------------|---|-------------------------------------|
| Mobile Air Unit | 1 | Puyallup Special Ops |
| Heavy Rescue Unit | 1 | Puyallup Special Ops |
| Water Rescue Units | 2 | Puyallup Special Ops/Riverside Fire |

Radio Frequencies

153.890 Mhz

Assembly Points

1. Puy Fire HQ, 902 7th St NW, Puyallup
2. Sumner Fire HQ, 800 Harrison, Sumner

Zone Coordinator

Ed Goodlet
 PCFD 8 – Edgewood
 10105 24th St. E.,
 Edgewood, WA 98371
 Office (253) 927-2313
 Fax (253) 927-2385
 Home (253) 826-6604
 Cell (253) 606-6601
 Nextel 112*27790*1

Alternate

Dennis Corbett
 Puyallup Fire Dept
 902 7th St NW
 Puyallup, WA 98371
 Office 253-841-5487
 Fax 253-770-3333
 Home 253-847-1800
 Cell/Pgr 253-377-4588
 Nextel # 112*29549*71

APPENDIX – G**ZONE 6: RESOURCE DEPARTMENTS**

| <u>Zone Departments</u> | <u>Business #</u> | <u>Dispatch Center</u> | <u>Frequency</u> |
|-------------------------------------|-------------------|------------------------|------------------|
| Dist 1 - Sumner Fire | 253-863-5451 | FireComm | 153.890 Mhz |
| Dist 8 - Edgewood | 253-927-2313 | FireComm | 153.890 Mhz |
| Dist 12 - Buckley | 360-829-1176 | FireComm | 153.890 Mhz |
| Dist 14 - Riverside Fire & Rescue | 253-922-5644 | Puyallup | 153.890 Mhz |
| Dist 18 - Orting | 360-893-7857 | FireComm | 153.890 Mhz |
| Dist 20 - So Prairie Fire | 360-897-8433 | FireComm | 153.890 Mhz |
| Dist 22 - East Pierce Fire & Rescue | 253-863-1800 | FireComm | 153.890 Mhz |
| Dist 25 - Crystal Mtn Fire | 360-663-2634 | Buckley | 159.090 Mhz |
| Dist 26 - Greenwater Fire | 360-663-2522 | Buckley | 159.090 Mhz |
| Buckley, City of | 360-829-1441 | Buckley | 159.090 Mhz |
| Carbonado, City of | 360-829-0125 | Buckley | 159.090 Mhz |
| Milton, City of | 253-922-0944 | Puyallup | 153.890 Mhz |
| Orting, City of | 360-893-2221 | FireComm | 153.890 Mhz |
| Puyallup, City of | 253-841-5432 | Puyallup | 153.890 Mhz |
| Wilkeson, City of | 360-829-1825 | FireComm | 153.890 Mhz |

APPENDIX – E

ZONE 6: RUN CARD

– Alpha page ALL Zone Coordinators for response on this page –

| RESOURCE | ZONE | ENGINE | LADDER | BLS | TENDER | ZONE | TEAMLDR |
|--------------------------------|--------------------------|---------------|--------------------|---------------|---------------|----------------|----------------|
| URBAN TASK FORCE | 1-1/TASK | *E111 | *LPU3 | *A44 | | TASK | *CPUB1 |
| | TRI-PRE/4-1 | *E41 | L121 | A4531 | | TRI-PRE | C403 |
| | 8-0 | *E812 | | A1231 | | TRI-PRE | C402 |
| 3 Structure Engines | TASK | E4521 | | A1431 | | TRI-PRE | C401 |
| 1 Ladder | 14-0 | E1412 | | A2031 | | 14-0 | C1401 |
| 1 BLS Unit | 18-0 | E1811 | | A1831 | | 8-0 | C801 |
| 1 Team Leader | BUCK | E5211 | | A1233 | | TASK | CPUF1 |
| | TRI-PRE12/1 | E1211 | | | | | |
| | 20-0 | E2012 | | | | | |
| <hr/> | | | | | | | |
| RURAL TASK FORCE: | TASK | *EPUE1 | TRI-PRE/4-5 | *A4531 | *T45 | 14-0 | *C1401 |
| | TRI-PRE/4-1 | *E41 | 8-0 | A1231 | *T851 | 4-AS | C403 |
| 3 Structure Engines | 1-1 | *E111 | 14-0 | A1431 | T1451 | 8-0 | C801 |
| 2 Tenders | TASK | E4521 | TASK | A2031 | T1853 | BUCK | C5201 |
| 1 Team Leader | BUCK | E5211 | 20-0 | A1831 | T2051 | TRI-PRE | F404 |
| 1 BLS Unit (Optional) | TRI-PRE/12-1 | E1211 | 18-0 | A1233 | | MILT | C4501 |
| | 8-0 | E812 | | | | | |
| | 14-0 | E1411 | | | | | |
| <hr/> | | | | | | | |
| INTERFACE TASK FORCE | TASK/TRI-PRE | *E4513 | *B41 | 8-0 | *T851 | TRI-PRE | *C403 |
| | TRI-PRE/12/1/14-0 | *E1211 | *BR14-1 | 18-0 | T1853 | 14-0 | C1401 |
| | 18-0 | E1811 | B9219 | BUCK | T1251 | 8-0 | C801 |
| 2 Structure Engines | 14-0 | E1411 | B1252 | 14-0 | T1451 | MILT | C4501 |
| 2 Wildland Engines | BUCK | E5211 | B42 | 20-0 | T2051 | | |
| 1 Tender | | | | | | | |
| 1 TeamLeader | | | | | | | |

*** DENOTES THE MINIMUM NUMBER OF APPARATUS THAT MAKES UP EACH RESPONSE**

APPENDIX – E

ZONE 6: RUN CARD (CONT'D)

– Alpha page ALL Zone Coordinators for response on this page –

| <u>RESOURCE</u> | <u>ENGINE</u> | <u>LADDER</u> | <u>BLS</u> | <u>TENDER</u> | <u>ENGINE</u> | <u>TEAMLDR</u> |
|---------------------------|---------------------|---------------|---------------|---------------|----------------|----------------|
| | TASK | *EPUE1 | | | TASK | *CPUB1 |
| ENGINE STRIKE TEAM | 1-1 | *E111 | | | TRI-PRE | C403 |
| | 14-0 | *E1412 | | | 14-0 | C1401 |
| 5 Structure Engines | 8-0 | *E812 | | | TRI-PRE | C402 |
| 1 Team Leader | TRI-PRE/4-1 | *E41 | | | 8-0 | C801 |
| | TASK | E4521 | | | TRI-PRE | C401 |
| | BUCK | E5211 | | | TASK | CPUF1 |
| | 18-0 | E1811 | | | BUCK | E5201 |
| | 20-0 | E2011 | | | MILT | C4501 |
| | TRI-PRE/12-1 | E1211 | | | | |
| <hr/> | | | | | | |
| BLS TEAM: | 1-1 | | *A131 | | 14-0 | *C1401 |
| | 14-0 | | *A1431 | | TRI-PRE | C402 |
| | TRI-PRE/4-2 | | *A42 | | TRI-PRE | C403 |
| 5 BLS Units | 8-0 | | *A831 | | 8-0 | C801 |
| 1 Team Leader | BUCK | | *A5231 | | BUCK | C5201 |
| | TASK | | A4531 | | TRI-PRE | C401 |
| | 18-0 | | A1831 | | | |
| | TRI-PRE/12-1 | | A1231 | | | |
| | 20-0 | | A2031 | | | |
| <hr/> | | | | | | |
| TENDER TEAM: | TRI-PRE/4-5 | | | *T45 | TRI-PRE | *C403 |
| | 8-0 | | | *T851 | TRI-PRE | C402 |
| | 14-0 | | | *T1451 | 8-0 | C801 |
| 5 Tenders | 18-0 | | | *T1853 | 14-0 | C1401 |
| 2 Team Leaders | TRI-PRE/12-1 | | | *T1251 | BUCK | C5201 |
| | 20-0 | | | T2051 | 14-0 | C1402 |
| | TASK | | | T2651 | TRI-PRE | C401 |

*** DENOTES THE MINIMUM NUMBER OF APPARATUS THAT MAKES UP EACH RESPONSE**

APPENDIX – E

ZONE 6: RUN CARD (CONT'D)

– Alpha page ALL Zone Coordinators for response on this page –

| <u>RESOURCE</u> | <u>ZONE</u> | <u>ENGINE</u> | <u>LADDER</u> | <u>BLS</u> | <u>TENDER</u> | <u>ZONE</u> | <u>TEAMLDR</u> |
|-------------------------------------|-------------------------|-----------------------|------------------------------------|----------------------------------|---------------|-------------|----------------|
| WILDLAND HAND CREW TEAM: | AT THIS HAND | TIME CREWS | THERE ARE NO WILD AVAIL | LAND IN PIERCE COUNTY | | | |
| 10 Personnel 1 Team Leader | PLEASE | SEE | HANDCREW CALLOUT LIST! | | | | |

Tone all participating departments in the zone and announce:

"Fire districts (numbers) and (names) and fire departments Wildland Hand Crew

Personnel, report to your stations.

Zone 6 Wildland Team leader _____, contact FireComm by phone."

| | | | | |
|---|---------------------|----------------|--------------|----------------------|
| WILDLAND TASK FORCE: TRI-PRE/4-1 | *B41 | 8-0 | *T851 | TRI-PRE *F405 |
| 3 Brush Engines | 14-0 | *BR14-1 | 18-0 | T1853 |
| 1 Tender | TRI-PRE/12-1 | *B1252 | 14-0 | T1451 |
| 1 Team Leader | TRI-PRE/4-2 | B42 | TRI-PRE | T1251 |
| | 14-0 | | | |

*** DENOTES THE MINIMUM NUMBER OF APPARATUS THAT MAKES UP EACH RESPONSE**

APPENDIX – E

ZONE 7: COORDINATORS

PREPLANNED RESOURCES:

| | | | |
|----------------------------|-----|------------------------|-----|
| ALS Strike Team: | PCW | EMS Task Force: | 1 |
| BLS Strike Team: | 1 | Interface Task Force: | 1 |
| Ladder Strike Team: | PCW | Rural Task Force: | 2 |
| Structure Eng Strike Team: | 2 | Urban Fire Task Force: | 1 |
| Tender Strike Team: | 1 | Wildland Task Force: | 1 |
| Wildland Eng Strike Team: | PCW | Wildland Hand Crew: | N/A |

SPECIALIZED RESOURCES:

| | | |
|-------------------------|---|-----------------------------------|
| Mobile Air Unit | 3 | Dist 6, 15, McChord AFB |
| "A" Level HazMat Team | 2 | Dist 6-21, McChord AFB |
| Foam AFFF Trls 1000 gal | 2 | McChord AFB |
| Porta-Tank 3000 gals | 1 | Dist 21 |
| Technical Rescue Unit | 2 | Dist 6, McChord AFB |
| Water Rescue Unit | 1 | Dist 6 |
| Wildland Equip Trl | 1 | Dist 23 <i>PIERCE CO USE ONLY</i> |

RADIO FREQUENCIES:

153.890 Mhz

ASSEMBLY POINTS:

Stn 6-1 (**WEST**) 100 114th St S, Parkland
 Stn 6-6 (**EAST**) 9813 128th St E, Puyallup

ZONE COORDINATOR:

Tony Judd
 Graham Fire & Rescue
 10012 187th St E
 Puyallup, WA 98375
 Office 253 847 8811
 Fax 253-847-2233
 Home 360-832-3473
 Pager 253-428-6203
 Cell 253-381-0656

ALTERNATE:

Bob Vellias
 PCFD 17 – Roy
 302 S. McNaught – PO Box 829
 Roy, WA 98580
 Office (253) 843-2424
 Fax (253) 843-2574
 Home (253) 847-8808
 Pager (253) 280-3023
 Cell (253) 377-4335

APPENDIX – E

ZONE 7: RESOURCE DEPARTMENTS

| <u>ZONE DEPARTMENTS</u> | <u>BUSINESS</u> | <u>DISPATCH</u> | <u>FREQUENCY</u> |
|---------------------------------------|-----------------|-----------------|------------------|
| Dist 6 - Central Pierce Fire & Rescue | 253-536-6400 | FireComm | 153.890 Mhz |
| Dist 15 - So Pierce Fire & Rescue | 253-847-4333 | FireComm | 153.890 Mhz |
| Dist 17 - Roy | 253-843-2424 | FireComm | 153.890 Mhz |
| Dist 21 - Graham | 253-847-8811 | FireComm | 153.890 Mhz |
| Dist 23 - Ashford/Elbe | 360-569-2752 | FireComm | 153.890 Mhz |
| Eatonville (City of) | 253-832-6931 | FireComm | 153.890 Mhz |
| McChord AFB | 253-984-2603 | McChord | 153.890 Mhz |

APPENDIX – E

ZONE 7: RUN CARD

| <u>RESOURCE</u> | <u>TONE</u> | <u>ENGINE</u> | <u>LADDER</u> | <u>BLS</u> | <u>TENDER</u> | <u>TONE</u> | <u>TEAMLDR</u> |
|-------------------------|-------------------|---------------|---------------|------------|---------------|--------------|----------------|
| URBAN TASK FORCE | 6-AS/21-1D | *E611 | *L2121 | | | 6-OF | *B6 |
| | 21-3D | *E615 | L611 | | | 21-1D | *C2103 |
| | 6-AS | *E617 | L616 | | | 21-1D | C2101 |
| 3 Structure Engines | TASK | E911 | | | | 6-OF | C604 |
| 1 Ladder | 6-AS | E618 | | | | 21-1D | C2102 |
| 1 Team Leader | 15-0 | E1512 | | | | 6-OF | C606 |
| | 43-0 | E4311 | | | | 6-OF | C601 |
| | 17-0/AS | E1711 | | | | 6-OF | C609 |

*******Move up E613 to Station 6-1*******

| | | | | | | | |
|--------------------------|---------------|---------------|--|--|--|--------------|---------------|
| STRUCTURAL ENGINE | 6-AS | *E611 | | | | 6-OF | *B6 |
| TEAM: | 6-AS | *E615 | | | | 21-1D | *C2103 |
| | 6-AS | *E617 | | | | 21-1D | C2101 |
| 5 Structure Engines | 21-1D | *E2111 | | | | 6-OF | C604 |
| 1 Team Leader | MCCHRD | *E911 | | | | 21-1D | C2102 |
| | 15-0 | E1512 | | | | 6-OF | C606 |
| | 6-AS | E618 | | | | 6-OF | C601 |
| | 43-0 | E4311 | | | | 6-OF | C609 |
| | 17-0/AS | E1711 | | | | 21-1D | C2101 |

*******Move up E613 to Station 6-1*******

| | | | | | | | |
|------------------------|--------------|--|---------------|--|--|--------------|---------------|
| BLS TEAM: | 6-AS | | *M611 | | | 6-OF | *B6 |
| | 21-1D | | *M2131 | | | 21-1D | *C2103 |
| 5 BLS Units | 15-0 | | *A1532 | | | 21-1D | C2101 |
| 1 Team Leader | 43-0 | | *A4331 | | | 6-OF | C604 |
| OR | 6-AS | | *M618 | | | 21-1D | C2102 |
| EMS TASK FORCE: | 17-0 | | A1730 | | | 6-OF | C606 |
| 2 ALS - 3 BLS Units | | | | | | 6-OF | C601 |
| 1 Team Leader | | | | | | 6-OF | C609 |

*** DENOTES THE MINIMUM NUMBER OF APPARATUS THAT MAKES UP EACH RESPONSE**

APPENDIX – E

ZONE 7: RUN CARD (CONT'D)

– Alpha page ALL Zone Coordinators for response on this page –

| RESOURCE | ZONE | ENGINE | LADDER | BLS | TENDER | ZONE | TEAMLDR |
|---------------------|-------------------|---------------|---------------|------------|---------------|--------------|----------------|
| TENDER TEAM: | 21-1D/21-2 | | | | *T2152 | 6-OF | *C605 |
| | 15-0 | | | | *T1552 | 21-1D | *C2103 |
| 5 Tenders | 6-AS | | | | *T617 | 21-1D | C2101 |
| 1 Team Leader | 17-0/AS | | | | *T1752 | 6-OF | C604 |
| | MCCHRD | | | | *T951 | 21-1D | C2102 |
| | | | | | | 6-OF | C606 |
| | | | | | | 6-OF | C601 |
| | | | | | | 6-OF | C609 |

*******Move up E618 to Station 06-6*******

| RESOURCE | ZONE | ENGINE | LADDER | BLS | TENDER | ZONE | TEAMLDR |
|--------------------------|-------------|---------------|---------------|------------|-------------------------|--------------|----------------|
| RURAL TASK FORCE: | 6-AS | *E611 | | | 21-1D/21-2 T2152 | 6-OF | *C605 |
| | 6-AS | *E615 | | | 15-0 *T1552 | 21-1D | *C2103 |
| 3 Structural Engines | 6-AS | *E617 | | | TASK T951 | 21-1D | C2101 |
| 2 Tenders | TASK | E911 | | | 6-AS T617 | 6-OF | C604 |
| 1 Team Leader | 15-0 | E1512 | | | 17-0/AS T1752 | 21-1D | C2102 |
| | 43-0 | E4311 | | | | 6-OF | C606 |
| | 17-0/AS | E1711 | | | | 6-OF | C601 |
| | | | | | | 6-OF | C609 |

*******Move up E613 to Station 06-3*******

| RESOURCE | ZONE | ENGINE | LADDER | BLS | TENDER | ZONE | TEAMLDR |
|-----------------------------|-------------|---------------|---------------|------------|-------------------|--------------|----------------|
| INTERFACE TASK FORCE | 6-AS | *E611 | *B2143 | | 6-AS *T617 | 6-OF | *C605 |
| | 6-AS | *E615 | *B1742 | | TASK T951 | 21-1D | *C2103 |
| 2 Structural Engines | 15-0 | E1512 | | | 17-0/AS T1752 | 21-1D | C2101 |
| 2 Wildland Engines | TASK | E911 | | | T2152 | 6-OF | C604 |
| 1 Tender | 6-AS | E617 | | | T1553 | 21-1D | C2102 |
| 1 Team Leader | 43-0 | E4311 | | | | 6-OF | C606 |
| | 17-0 | E1711 | | | | 6-OF | C601 |
| | | | | | | 6-OF | C609 |

*******Move E618 to Stn 06-6 and E613 to Stn 06-1*******

*** DENOTES THE MINIMUM NUMBER OF APPARATUS THAT MAKES UP EACH RESPONSE**

APPENDIX – E

ZONE 7: RUN CARD (CONT'D)

– Alpha page ALL Zone Coordinators for response on this page –

| <u>RESOURCE</u> | <u>TONE</u> | <u>DISTRICT</u> | <u>LADDER</u> | <u>BLS</u> | <u>TENDER</u> | <u>TONE</u> | <u>TEAMLDR</u> |
|-------------------------------|-----------------|-----------------|----------------|--------------|-----------------------|-------------|----------------|
| WILDLAND HAND CREW TEAM | AT THIS HAND | TIME CREWS | THERE AVAIL | ARE NO IN | WILDLAND PIERCE CO | | |
| 10 Personnel 1 Team Leader | PLEASE | SEE | HAND | CREW | CALLOUT | LIST! | |

Tone all participating departments in the zone and announce:

"Fire districts (numbers) and (names) and fire departments Wildland Hand Crew Personnel, report to your stations.

Zone 7 Wildland Team Leader, _____, Contact FireComm by phone.

| WILDLAND TASK FORCE: | 17-0/AS | *B1742 | 21-1D/21-2 | *T2152 | 6-OF | *C609 |
|-----------------------------|-----------------|---------------|-------------------|---------------|--------------|---------------|
| 3 Brush Engines | 21-1D/3D | *B2143 | 17-0/AS | T1752 | 21-1D | *C2103 |
| 1 Tender | 6-AS | *B610 | 15-0 | T1553 | 6-OF | C605 |
| 1 Team Leader | 15-0 | B1541 | MCCHRD | T951 | 6-OF | C606 |
| | | | | | 6-OF | C604 |
| | | | | | 15-0 | C1502 |

*** DENOTES THE MINIMUM NUMBER OF APPARATUS THAT MAKES UP EACH RESPONSE**

APPENDIX – E

ZONE 8: COORDINATORS

PREPLANNED RESOURCES:

| | | | |
|----------------------------|-----|------------------------|---|
| ALS Strike Team: | PCW | EMS Task Force: | 1 |
| BLS Strike Team: | 1 | Interface Task Force: | 1 |
| Ladder Strike Team: | PCW | Rural Task Force: | 2 |
| Structure Eng Strike Team: | 1 | Urban Fire Task Force: | 2 |
| Tender Strike Team: | 1 | Wildland Task Force: | 1 |
| Wildland Eng Strike Team: | PCW | Wildland Hand Crew: | 1 |

SPECIALIZED RESOURCES:

| | |
|-----------------|---|
| Mobile Air Unit | 1 |
| HazMat Units | 2 |
| Fire Boat | 2 |
| Crash Truck | 1 |

4X4 VEHICLES

| |
|--------------------------|
| Pickups Dist 2, 3, 5, 16 |
| Suburban Dist 5, 16 |

RADIO FREQUENCIES:

153.890 Mhz
154.355 Mhz

ASSEMBLY POINTS:

Stn 02-1 5000 Steilacoom Bl SW, Lakewood
TFD 12 2015 54th Ave E, Fife
Stn 05-1 6711 Kimball Dr, Gig Harbor

ZONE COORDINATOR:

Eric Watson
Dist 5/Gig Harbor Fire
10222 Bujacich Rd NW
Gig Harbor, WA 98335
Office 253-851-3111
Fax 253-851-9606
Home 253-851-3333
Cell 253-377-4602
112*23368*111

ALTERNATE:

Jeff Jensen
Tacoma Fire
901 S Fawcett
Tacoma, WA 98402
Office 253-591-5798
Fax 253-591-5746
Home 253-952-7494
Pager 253-428-9092
Cell 253-973-0092

APPENDIX – E

ZONE 8: DEPARTMENTS RESOURCES

| <u>ZONE DEPARTMENTS</u> | <u>BUSINESS</u> | <u>DISPATCH</u> | <u>FREQUENCY</u> |
|---------------------------|-----------------|-----------------|------------------|
| Dist 2 - Lakewood | 253-582-4600 | FireComm | 153.890 Mhz |
| Dist 3 - University Place | 253-564-1623 | FireComm | 153.890 Mhz |
| Dist 5 - Gig Harbor | 253-851-3111 | FireComm | 153.890 Mhz |
| Dist 13 - Browns Point | 253-952-4776 | FireComm | 153.890 Mhz |
| Dist 16 - Key Peninsula | 253-884-2222 | FireComm | 153.890 Mhz |
| Dist 27 - Anderson Island | 253-884-4040 | FireComm | 153.890 Mhz |
| Dist 42 - Dupont | 253-964-8121 | FireComm | 153.890 Mhz |
| Dist 46 - Ruston | 253-759-3544 | FireComm | 153.890 Mhz |
| Dist 48 - Steilacoom | 253-581-0100 | FireComm | 153.890 Mhz |
| Tacoma (City of) | 253-591-5733 | Tacoma | 154.130 Mhz |
| Fort Lewis Army Base | 253-967-4479 | Fort Lewis | 153.890 Mhz |

APPENDIX – E**ZONE 8: RUN CARD**

– Alpha page ALL Zone Coordinators for response on this page –

| RESOURCE | TONE | ENGINE | LADDER | BLS | TENDER | TONE | TEAMLDR |
|-------------------------|-------------------|------------------|----------------|----------------|---------------|----------------------|----------------|
| URBAN TASK FORCE | TASK | *TACOMA | *TACOMA | *TACOMA | | 2-PRE | *B2 |
| | 2PRE/AS | *DIST 2 ~ | L221 ~ | DIST 5 | | TASK | TACCMD |
| | 5/MI/N/S/C | *DIST 5 | L321~ | DIST 2 | | 5/MI/N/S/C B5 | |
| 3 Structure Engines | 3-0 | DIST 3 ~ | TACOMA | DIST 3 | | 3-0 | B3 |
| 1 Ladder | TASK | TACOMA | | | | | |
| 1 Team Leader | TASK | FT LEWIS | | | | | |
| | 16-0/OF | DIST 16 | | | | | |
| | TASK | TACOMA | | | | | |
| | 46-0 | DIST 46 | | | | | |
| | 13-0 | DIST 13 | | | | | |

~ INDICATES THAT TWO UNITS FROM THE SAME DISTRICT SHOULD NOT BE USED TOGETHER

| | | | | | | | |
|-------------------------------|-------------------|-----------------|--|--|--|----------------------|----------------|
| STRUCTURAL ENGINE TASK | | *TACOMA | | | | 2-PRE | *B2 |
| TEAM: | 2-PRE/AS | *DIST 2 | | | | TASK | *TACCMD |
| | 3-0 | *DIST 3 | | | | 5/MI/N/S/C B5 | |
| 5 Engines | 5/MI/N/S/C | *DIST 5 | | | | 3-0 | B3 |
| 2 Team Leaders | 16-0 | *DIST 16 | | | | | |
| | TASK | FT LEWIS | | | | | |
| | TASK | TACOMA | | | | | |
| | 13-0 | DIST 13 | | | | | |
| | 48-D/O | DIST 48 | | | | | |
| | 46-O/OF | DIST 46 | | | | | |

| | | | | | | |
|------------------|-------------------|--|----------------|--|------------------------|------------|
| BLS TEAM: | 5/MI/N/S/C | | *DIST 5 | | 2-PRE | *B2 |
| | TASK | | *TACOMA | | 5/MI/N/S/C C508 | |
| 5 BLS Units | 3-0 | | DIST 3 | | | |
| 2 Team Leaders | 16-0 | | DIST 16 | | | |
| | 2-PRE/AS | | DIST 2 | | | |
| | 13-0 | | DIST 13 | | | |

*** DENOTES THE MINIMUM NUMBER OF APPARATUS THAT MAKES UP EACH RESPONSE**

APPENDIX – E

ZONE 8: RUN CARD (CONT'D)

– Alpha page ALL Zone Coordinators for response on this page –

| <u>RESOURCE</u> | <u>ENGINE</u> | <u>LADDER</u> | <u>BLS</u> | <u>TENDER</u> | <u>ENGINE</u> | <u>TEAMLDR</u> |
|---------------------|---------------|---------------|------------|---------------|---------------|----------------|
| TENDER TEAM: | 5/MI/N/S/C | | | *DIST 5 | 5/MI/N/S/C | *B5 |
| | 5/MI/N/S/C | | | *DIST 5 | 16-0 | *B16 |
| 5 Tenders | TASK | | | *TACOMA | | |
| 2 Team Leaders | 16-0 | | | *DIST 16 | | |
| | 16-0 | | | *DIST 16 | | |
| | 5/MI/N/S/C | | | DIST 5 | | |

| | | | | | | |
|------------------------------------|-------------------------|-----------------------|------------------------|-----------------------------|----------------------|-------------|
| WILDLAND HAND CREW TEAM | AT THIS HAND | TIME CREWS | THERE AVAIL | ARE NO IN PIERCE | WILD CO | LAND |
| 10 Personnel 1 Team Leader | PLEASE | SEE | HAND | CREW | CALLOUT LIST! | |

Tone all participating departments in the zone and announce:

"Fire Districts (numbers) Wildland Hand Crew Personnel, report to your stations.

Zone 8 Wildland Team leader (number), contact FireComm by phone."

| | | | | | |
|----------------------------------|-----------------|-------------------|--------------|-------------|---------------|
| WILDLAND TASK FORCE: 16-0 | *B1659 | 5/MI/N/S/C | *T556 | 16-0 | *F1607 |
| 3 Brush Engines | 3-0 | *E313 | 5/MI/N/S/C | T552 | 16-0 F1685 |
| 1 Tender | 2-PRE/AS | *E213 | 16-0 | T1655 | |
| 1 Team Leader | | | 16-0 | T1652 | |

*** DENOTES THE MINIMUM NUMBER OF APPARATUS THAT MAKES UP EACH RESPONSE**

APPENDIX – E

PIERCE COUNTY WIDE: WILDLAND INTERFACE RESOURCES

| <u>PREPLANNED RESOURCES:</u> | <u>TOTAL</u> | <u>ZONE 6</u> | <u>ZONE 7</u> | <u>ZONE 8</u> |
|-------------------------------------|---------------------|----------------------|----------------------|----------------------|
| Wildland Eng Strike Team: | PCW | 0 | 0 | 0 |
| Wildland Tender Strike Team: | PCW | 0 | 0 | 0 |
| Interface Task Force: | 3 | 1 | 1 | 1 |
| Wildland Task Force: | 3 | 1 | 1 | 1 |
| Wildland Hand Crew: | PCW | 0 | 0 | 0 |

RADIO FREQUENCIES:

153.890 Mhz

ASSEMBLY POINTS:

Stn 05-1 8711 Kimbal Dr, Gig Harbor
 Stn 06-6 9813 128th St E, Puyallup

COUNTY COORDINATOR:

Jim Jaques
 Milton Fire Dept
 1000 Laurel
 Milton, WA 98354
 Office 253-922-0944
 Fax 253-922-1752
 Home 253-939-6062
 Cell 253-405-2061
 Nextel #112*17464*13

ALTERNATE:

Gary Franz
 Graham Fire & Rescue
 10012 187TH St E
 Graham WA 98338
 Office 253-847-8811
 Pager 253-207-1902
 Fax 253-847-2233
 Home 253-
 Cell 253-381-6902
 Nextel #112*29549*222

APPENDIX – E

PIERCE COUNTY WIDE: WILDLAND INTERFACE RESOURCES DEPARTMENTS

| <u>Zone Departments</u> | <u>Business #</u> | <u>Dispatch Center</u> | <u>Frequency</u> |
|---------------------------------------|-------------------|------------------------|------------------|
| Dist 5 - Gig Harbor | 253-272-6685 | FireComm | 153.890 Mhz |
| Dist 6 - Central Pierce Fire & Rescue | 253-538-6400 | FireComm | 153.890 Mhz |
| Dist 8 - Edgewood | 253-927-2313 | FireComm | 153.890 Mhz |
| Dist 12 - Buckley | 360-891-9344 | Firecomm | 153.890 Mhz |
| Dist 14 - Riverside Fire & Rescue | 253-922-5644 | Puyallup | 153.890 Mhz |
| Dist 15 - So Pierce Fire & Rescue | 253-847-4334 | FireComm | 153.890 Mhz |
| Dist 16 - Key Peninsula | 253-884-2222 | FireComm | 153.890 Mhz |
| Dist 17 - Roy | 253-843-2424 | FireComm | 153.890 Mhz |
| Dist 21 - Graham | 253-847-8811 | FireComm | 153.890 Mhz |
| Dist 22 - East Pierce Fire & Rescue | 253-863-1800 | FireComm | 153.890 Mhz |
| Dist 23 - Ashford/Elbe | 360-569-2752 | FireComm | 153.890 Mhz |
| City of Milton | 253-922-0944 | Puyallup | 153.890 Mhz |

APPENDIX – E

PIERCE COUNTY WIDE: WILDLAND INTERFACE RESOURCES RUN CARD

– Alpha page ALL Zone Coordinators for response on this page –

| RESOURCE | TONE | ENGINE | LADDER | BLS | TENDER | TONE | TEAMLDR |
|------------------------|--------------------|----------------|---------------|------------|----------------|----------------|----------------|
| Wildland Engine | TRI-PRE/4-1 | *B41 | | | TRI-PRE | *F405 | |
| Strike Team: | 14-0 | *BR14-1 | | | TRI-PRE | C401 | |
| | 16-0 | *B1659 | | | 16-0 | F1607 | |
| 5 Apparatus | 6-0 | *B610 | | | 16-0 | F1685 | |
| 1 Team Leader | 21-1D/3D | *B2143 | | | 6-OF | C609 | |
| | TRI-PRE | B1252 | | | 14-0 | C1401 | |
| | TRI-PRE | B42 | | | TRI-PRE | C403 | |
| | 17-0 | B1742 | | | | | |
| | 15-0 | T1553 | | | | | |
| | 16-0 | B1658 | | | | | |
| | TASK | B9219 - BATES | | | | | |
| | 23-0 | B2314 | | | | | |
| Wildland Tender | 8-0 | | | | *T851 | TRI-PRE | *F405 |
| Strike Team: | 6-AS | | | | *T617 | TRI-PRE | C401 |
| | 21-1D/3D | | | | *T2152 | 16-0 | C1607 |
| 5 Apparatus | 16-0 | | | | *T1655 | 16-0 | F1685 |
| 1 Team Leader | TASK | | | | *T951 | 6-OF | C609 |
| | 18-0 | | | | T1853 | 14-0 | C1401 |
| | 16-0 | | | | T1653 | TRI-PRE | C403 |
| | 17-0/AS | | | | T1752 | | |
| | 15-0 | | | | T1552 | | |
| | 14-0 | | | | T1451 | | |
| | 21-1D/3D | | | | T2151 | | |
| | TRI-PRE/4-5 | | | | T45 | | |

*** DENOTES THE MINIMUM NUMBER OF APPARATUS THAT MAKES UP EACH RESPONSE**

APPENDIX – E

PIERCE COUNTY WIDE: EMS TASK FORCE

**PREPLANNED
RESOURCES:**

| | <u>TOTAL</u> |
|---------------------|---------------------|
| EMS Task Force: | 2 |
| Ladder Strike Team: | 1 |
| ALS Strike Team: | 1 |
| Overhead Team | 1 |

RADIO FREQUENCIES:

153.890 Mhz

ASSEMBLY POINTS:

Stn 06-1 100 114th St S, Parkland (**Westside**)

Puyallup HQ 902 7th St NW, Puyallup (**Eastside**)

| <u>RESOURCE</u> | <u>TONE</u> | <u>ALS</u> | <u>BLS</u> | <u>MSO</u> | <u>TONE</u> | <u>TLEADER</u> |
|------------------------|-------------------------|-------------------|-------------------|-------------------|--------------------|-----------------------|
| EMS Task Force: | TASK/1-1/2-PRE | *MPUM3 | *A131 | *C208 | 2-PRE | B2 |
| | 6-AS/TRI-PRE/5MI | *M611 | *A41 | C508 | 6-OF | B6 |
| 2 ALS | TASK/8-0 | MTAC | *A831 | PUYF4 | TASK | CPUB1 |
| 3 BLS | 21-1D/3D/14-0 | M2137 | A1431 | C1602 | | |
| 1 MSO | 2-PRE-1/17-0 | M231 | A1730 | C306 | | |
| 1 Team Leader | 5-MI/N/S/C | M539 | A1532 | C2104 | | |
| | 6-AS | M618 | A1632 | | | |
| | 3-1 | M331 | A4531 | | | |
| | 16-0 | A1632 | A1831 | | | |
| | TASK | MTAC | | | | |

*** DENOTES THE MINIMUM NUMBER OF APPARATUS THAT MAKES UP EACH RESPONSE.**

APPENDIX – E

PIERCE COUNTY WIDE: ALS STRIKE TEAM

| <u>RESOURCE</u> | <u>ZONE</u> | <u>ALS</u> | <u>BLS</u> | <u>MSO</u> | <u>ZONE</u> | <u>TLEADER</u> |
|-------------------------|-----------------------|---------------|------------|--------------|-------------|----------------|
| ALS Strike Team: | TASK/5MI/N/S/C | *MPUM3 | | *C508 | 6-0F | *B6 |
| | 6-AS | *M611 | | C208 | 2-PRE/TASK | CPUB1 |
| 5 ALS | TASK | *MTAC | | PUYF4 | TASK/2-PRE | B2 |
| 1 MSO | 2-PRE/2-1 | *M231 | | C2104 | 21-1D | |
| 1 Team Leader | 5/MI/N/S/C | *M539 | | C305 | 3-1 | |
| | 21-1D/3D | M2137 | | TAC194 | TASK | |
| | 6-AS | M618 | | C1602 | 16-0 | |
| | 3-1 | M331 | | | | |
| | 16-0 | A1632 | | | | |
| | TASK | MTAC | | | | |

*** DENOTES THE MINIMUM NUMBER OF APPARATUS THAT MAKES UP EACH RESPONSE.**

PIERCE COUNTY WIDE: LADDER STRIKE TEAM

| <u>RESOURCE</u> | <u>ZONE</u> | <u>ALS</u> | <u>BLS</u> | <u>MSO</u> | <u>ZONE</u> | <u>TLEADER</u> |
|----------------------------|------------------|---------------|------------|------------|-------------|----------------|
| Ladder Strike Team: | 21-1D/3D | *L2121 | | | TASK | *TACCMD |
| | 6-AS | *L611 | | | 2-PRE | B2 |
| 5 Ladders | TASK | *LTAC | | | 6-OF | B6 |
| 1 Team Leader | 2-PRE/2-1 | *L221 | | | | |
| | 3-0 | *L321 | | | | |

*** DENOTES THE MINIMUM NUMBER OF APPARATUS THAT MAKES UP EACH RESPONSE.**

APPENDIX – F

Hand Crew Callouts:

Bates Tech College

Monday-Friday 0800-1700 hrs

253-680-7460

After hrs:

Pat Piper

253-680-7463 Office

253-380-2440 Cell

253-851-1608 Home

Medicine Creek Hand Crew

1-360-825-1631

Dispatched thru DNR

Mt View Fire & Rescue

King Co FD #44

1-253-852-2121

Dispatched thru Valley Comm

Available Equipment:

1 – 3000 Gallon tender

2 – Ten person hand crews with hand gear

1 – TEN PERSON HAND CREW AFTER JULY

Mutual aid within Pierce County – outside the County ****Cost based on State Chiefs Rate*****

APPENDIX -G

COMMUNICATION CENTER ACTIVATION CHECKLIST

- 1. Nature: _____ Address: _____
 Frequency: _____ Staging Area: _____
- 2. Type of response requested:

| <u>Zone</u> | <u>Resources</u> | <u>PCW</u> | <u>Resources</u> |
|-------------|----------------------------|------------|---------------------------|
| _____ | Engine Strike Team (ET) | _____ | ALS Strike Team (ALST) |
| _____ | BLS Strike Team (BLST) | _____ | Ladder Strike Team (LST) |
| _____ | Tender Strike Team (TT) | _____ | Wildland Eng ST (WEST) |
| _____ | Urban Task Force (UTF) | _____ | EMS Task Force (EMSTF) |
| _____ | Wildland Task Force (WTF) | _____ | Wildland Hand crew (WHCT) |
| _____ | Rural Task Force (RTF) | _____ | Overhead Team (OHT) |
| _____ | Interface Task Force (ITF) | | |
- 3. Host Zone # _____ Response Zone # _____ PCW _____
- 4. Complete Fire Resource Plan dispatch sheet and create incident in CAD.
- 5. Tone units using format: '(units) + (type of request) + (assembly point*) + (Team leader(s) contact FireComm by phone)' Respond on Frequency 1
*Overhead team members are toned to respond directly to the scene.
- 6. Units have 4 minutes to respond via radio or phone. Replace unavailable units. If unable to fill a COMPLETE response from the first response zone, cancel all units and start over at step 4 using next up ZONE. **Overhead Team can respond without a complete response with the permission of the Incident Commander.
- 7. Team Leader contacts FireComm by phone. Advise Team Leader: Nature of incident, location, fire department handling incident, base location, ops frequency, composition of teams/units that have responded, response mode, and special travel directions.
- 8. Contact DEM duty officer to attain a mission number and relay any special requests made by the Incident Commander. (i.e. Tac1)
- 9. Notify Pierce Co Fire Resource coordinator via CAD page (!FRC). This will notify ALL coordinators of an incident, including Chief Fallstrom from So Puget Sound
- 10. Page the first up Chief (if different from coordinator), on the Pierce County Coordinator list (page 21). If no response in five minutes, go to next person on the list.
- 11. Track times and assign incident numbers.
- 12. Fax copies of all paperwork, including CAD incident to C4501 (253-922-1752).

APPENDIX – H

RESOURCES AND CONTACTS

Command/Management:

County Overhead Team Five Command Officers and One MSO Request from through Fire Comm

Tac 1 DEM Mobile Command post with mapping, computer equipment, Radio communications. Fire Comm will provide a dispatcher upon request to do radio communications for Command. Request through FireComm to DEM on Duty Officer.

Wildland:

Hand tools and equipment Pierce County District 23, DNR Wildland cache request through FireComm.

Hand Crews Purdy Women's Correction 2-Type II crews request through DNR, Bates Vo-Tech request through FireComm, Mt View Fire request through Valley Comm

Brush Units Available from Ft Lewis department of forestry depending on staffing and the time of year. Contact Joe Resoner

Support Services:

Pierce County CISM Team for counseling and defusing at the incident or back at the station after the incident. Debriefings available 24-72 hours after the incident. Team can also provide debriefings to family members of emergency workers. Contact the Team Coordinator through DEM duty officer (253) 798-7470

Angle 1 van available from the Tacoma Pierce County Chaplaincy for support of emergency workers at the incident scene including coffee and light snacks. Counseling and defusing services also available. Contact DEM Duty officer 253-798-7470.

Emergency Medical:

MMRS (Metro Medical Response System) Pharmaceutical supplies are available for use by first responders in the event of a terrorist incident involving a weapon of mass destruction.

In the event of a chemical exposure, Mark I kits and Valium Auto injectors are available. They are stored at three sites; Tacoma Fire Department Training Center, Puyallup Fire Department Station 1, and Gig Harbor Fire Department Station 5-0. **To obtain these supplies contact your dispatch agency.** They will contact Tacoma Fire Dispatch. Provide the following information:

- ✓ **Number of victims**
- ✓ **Location of victims**
- ✓ **On-scene point of contact for medications**
- ✓ **Call back number**

TFD will initiate their internal notification process. Each storage site is responsible for ensuring the requested pharmaceuticals be delivered within 30 minutes. In the event multiple sites are affected in the county, TFD will contact the Disaster Medical Control Center (Good Samaritan ED) to coordinate distribution.

In the event of an attack with a biological agent, contact Tacoma Pierce County Health Department at 253-798-6410 or 1-800-726-6404. They will confirm the exposure and follow their protocols for distribution and administration.

Level B Biohazards suits are also available. Please notify your dispatch agency while making your initial request if you need these. They are stored at the same sites as the pharmaceuticals.

Equipment:

Buses for transporting people or for sheltering in place. Pierce County Transit contact DEM Duty officer 253-798-7470

Helicopters Black hawks available from Ft Lewis request through DEM, Air 4 available for aerial photos and recon contact KOMO 4 through Fire Comm. King County Angle 1 KCSO available for infer red and search from King County DEM.

Construction Equipment available from Pierce County public works on request through DEM, DNR Resource Book – contact DNR

APPENDIX – I

COMMUNICATION CENTER ACTIVATION PROCEDURES

*The **Incident commander** requesting the resource supplies should gather the following information:*

1. Nature of the incident: _____
Address of incident: _____
2. Type of response requested: _____ Freq: _____
3. Staging area and special instructions: _____
_____ P or R

*The **call receiver**:*

4. Determine the Fire District the incident is located **in**.
5. Locate the Fire District on the Fire Resource Runcard Directory on page 2 and select The first zone listed for response.
6. Turn to the response type and selecting the response units based on zone **or**.
7. Enter the address of the incident in the *address* field in CAD.
8. Locate the correct activity type for the resource requested from the list on page 3 and Enter it into the *type* field in CAD.

*The **dispatcher**:*

9. Tones the call in this order:
 - **Units to respond** (“Puy Eng 1, E111, E812, etc.”)
 - **Frequency Assignment** (“PC Frequency 1”)
 - **Type of Request** (“Request for Engine Company Strike Team”)
 - **Assembly Point** (“Assemble at ___”) (OHT goes direct to scene))
 - **Team Leader Instructions** (“Puyallup Command – Team Leader, contact Fire Comm for instructions.”)
10. Units, or their dispatch centers have three (3) minutes to respond. If no response is received the next unit on the runcard will be toned. See the “Fire Resource Plan Checklist” Appendix G items 7-12.

APPENDIX – J

DNR Inmate Crew Hiring/Standard Lunch

Dispatch Procedures: Jurisdictional agency requests a 10-person crew through their dispatch center (FireComm). FireComm calls DNR dispatch to request the crew, and gives direction to the fire. DNR will dispatch a crew and notify FireComm of an ETA.

Logistic Policy: Crews that are dispatched from camp prior to 0530 are entitled to a breakfast. Crews that return from a fire to camp after 1730 are required to be provided a dinner. Lunches are usually made the night before so they usually come with lunches. Since the lunches are made the night before, they can eat their lunches for breakfast depending on the situation and then lunches would need to be ordered. This needs to be worked out with the supervisor. Attached is a meal agenda. Also, special dietary needs must be met, for example: vegetarian or no pork. Usually the foreman will notify you of that.

These are women crews typically, there is usually dense enough vegetation they can get privacy to relieve themselves. However in open area a port-a-potty would need to be furnished.

Billing Procedures: DNR will bill the jurisdictional agency for the cost of the crew. Typically the cost of a crew and foreman for a normal 10-hour workday is around \$600. Meal cost is NOT included in that price. The crews normal work schedule is Monday thru Thursday. Days off would result in a higher cost to hire the crews.

- You may hire a DNR liaison to work between the jurisdictional agency and the crew, until you become familiar with the inmate crews.
- The DNR liaison may respond under mutual aid for a short duration to assist.

DNR dispatch will also order the lunches for you, however you may have to send someone to pick them up. If you take the attached ‘Standard Fire Lunch’ requirements to your local Safeway or QFC, they can usually put these together for a reasonable price and in a reasonable time. Tell them this is an emergency lunch order.

STANDARD FIRE LUNCH

- 2 Meat sandwiches (meat w/butter only) 3-4 ounces of meat per sandwich. Turkey, Ham, Beef or Pastrami. Mustard, Mayo and Ketchup in small packets.

OR

- 2 Vegetarian sandwiches – Bread or bagel, cheese, vegetables, cream cheese in packets.
- 2 Slices of cheese individually wrapped
- 2 Small cans/boxes of juice or 1 container of Gatorade type drink (NO POP)
- 2 Candy bars or a desert (individually wrapped cookies, etc) No cream type
- 1 Package of gum
- 1 Apple or Orange (NO Banana)
- 1 Small package of potato chips or pretzels.

No peanut butter and jelly unless specified and ABSOLUTELY no egg products on or in sandwiches

No substitutions for the remainder of the above items.

Maximum price per lunch, \$14.00 including tax

APPENDIX – K

FIRE RESOURCE ACTIVITY TYPES

| | |
|-------------|-------------------------------|
| ALSST | ALS Strike Team |
| BLST..... | BLS Strike Team |
| EMSTF..... | EMS Task Force |
| ET | Structural Engine Strike Team |
| ITF..... | Interface Task Force |
| LST | Ladder Strike Team |
| OHT | Overhead Team |
| RTF | Rural Task Force |
| TT..... | Tender Strike Team |
| UTF..... | Urban Task Force |
| WEST..... | Wildland Engine Strike Team |
| WHCT..... | Wildland Hand Crew Team |
| WTF | Wildland Task Force |

